



# **EXPERTS CNC TECHNOLOGIES**

**A Source of C.N.C Machining Components**

**Shed No.B-197, 5<sup>th</sup> Main, 2<sup>nd</sup> Stage,  
Peenya Industrial Area, Bengaluru-560058.**

**E-Mail : [expertscnctechnologies@gmail.com](mailto:expertscnctechnologies@gmail.com)**

## Experts CNC Technologies - At a Glance

- **Experts CNC Technologies is a CNC Machining house specialized in Machining of Machine Tools, Earthmoving Equipment Components and other General Engineering Components etc.**
- **Experts CNC Technologies was incorporated on May 2019 by two Managing Partners Mr. Prakash HN & Raviraj B. Both are having 20 Years of vast experience in Manufacturing industry.**



**Mr. Prakash HN**



**Mr. Raviraj B**

# Mission, Vision & Values

## MISSION

Our motto is Quality First & Pursuing Excellence in machining.

Help our clients to meet their Quality & delivery.

Provide quality health & safety to our employees.

Positively contribute to development of our society & environment



## VISION

To be recognized as a world class manufacturer of CNC machined Parts

## VALUES

Excellence, Integrity, Team work & Mutual Respect.



# Quality Policy

## Quality Policy

Experts CNC Technologies is committed to supply high precision CNC Machined components to our customers by adopting best practices in the industry, continually improving the effectiveness of QMS in all manners that lead to achieve the customers' satisfaction

## Quality Objectives

- 1 To achieve Customer satisfaction by supplying right quality parts at right time with competitive costs
2. To reduce internal & external rejections & reworks
3. Continuous internal & external training programs to all employees to upgrade their knowledge
4. Provide facilities & work environment that is safe, healthy & clean.



## Manufacturing Facilities

**C.N.C Turning Centers**

**- 02 Nos**

**C.N.C Milling Center (VMC)**

**- 03 Nos**

**Note: Apart from this, we have very good strong network for outsourcing activities for special processes like ,**

- 1) Heat Treatment, (Q&T, Case Hardening, Induction Hardening)**
- 2) Plating, Anodising**
- 3) Grinding - Surface, Cylindrical & Centerless**

## CNC Turning Specifications

	Unit	Jobber LM
<b>CAPACITY</b>		
Distance between centres	mm	400
Max. turning diameter	mm	270
Max turning length	mm	400
Swing over bed	mm	460
Swing over carriage	mm	230

	Unit	JAGUAR
<b>CAPACITY</b>		
Distance between centers	mm	500
Max. turning diameter	mm	320
Max turning length	mm	300
Swing over bed	mm	500
Swing over carriage	mm	230

## VMC Specifications

	Unit	Jyothi-RX20
<b>CAPACITY</b>		
X	mm	820
Y	mm	510
Z	mm	510
RPM	RPM	8000
ATC	NO	24

	Unit	AMS 540V
<b>CAPACITY</b>		
X	mm	500
Y	mm	400
Z	mm	450
RPM	RPM	8000
ATC	NO	24

	Unit	Global VMC 800
<b>CAPACITY</b>		
X	mm	800
Y	mm	550
Z	mm	550
RPM	RPM	8000
ATC	NO	24

## Turning Center



**Make: PRIDE Machine Tools**

**Model : Jaguar**



**Make: Ace Designers**

**Model : Jobber LM**

# Vertical Machining Centers



**Make : Jyothi Machine Tools**

**Model : RX 20**



**Make : AMS**

**Model : 540V**



**Make : Global**

**Model : Global, VMC 800**

# CMM



<b>Measuring range</b>	
X axis	600 mm
Y axis	1000 mm
Z axis	500 mm
<b>Mode of operation</b>	CNC
<b>Max. Workpiece weight (kg)</b>	250
<b>*Accuracy MPEE (as per ISO 10360 - 2 with TP200 in <math>\mu\text{m}</math>)</b>	1.5 + L / 350
<b>Resolution (in <math>\mu\text{m}</math>)</b>	0.1 / 0.5
<b>Guidance</b>	Air bearings on all axes
<b>Linear Velocity</b>	400 mm/s
<b>Volumetric Velocity</b>	700 mm/s
<b>Measuring table (Material)</b>	Granite
<b>Probing</b>	Renishaw Probing – PH10M Probe Head, TP20 Probe, Styli 11 Pcs,



Digital 2D Height Master- Mitutoyo  
Make Range : 0-600mm



Digital Height Gauge 0-300 mm



## Our Strengths

A team with -

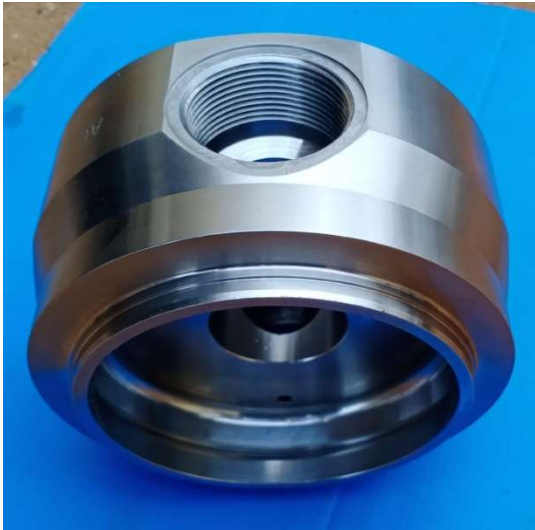
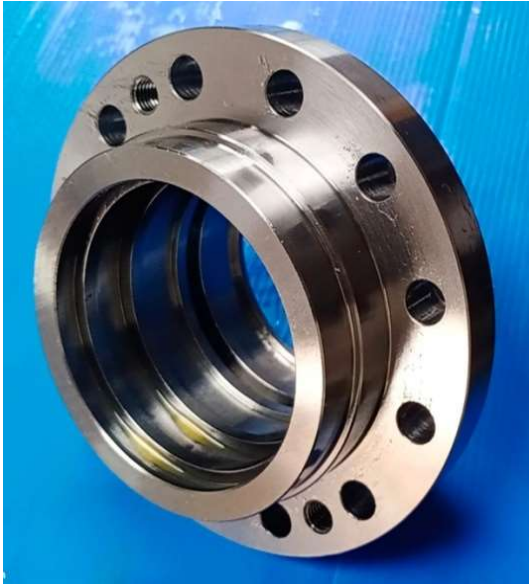
- Technically qualified process Engineer having 20+ years of process Knowledge ,
- Qualified team of Purchase & Supply Chain Management,
- Qualified Quality Inspectors,
- Qualified CNC Machine Operators



## Our Clients

- **L&T Construction Equipment limited**
- **TAFE Access Ltd, Chennai**
- **OTTO Hofstetter India Pvt Ltd**
- **Rotzler Services Pvt Ltd**
- **Exports- Germany**

# Components Gallery



# Components Gallery



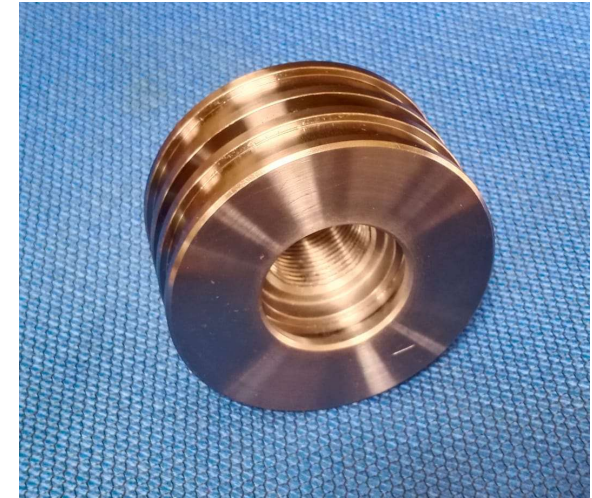
# Components Gallery



**Bottom Eye**



**Rod Eye End**



**Piston**



**Bracket**



**Flange**

# Components Gallery



Spool



Gear Shaft



Head End Cover



Piston



Cylinder Bottom



## Key Contact Details

**Prakash H N**

**Managing Partner**  
**+91 8660607669**

**Raviraj B**

**Managing Partner**  
**+91 8660727001**

**Shed No.B-197, 5<sup>th</sup> Main, 2<sup>nd</sup> Stage,  
Peenya Industrial Area, Bengaluru-560058**  
**E-Mail : [expertscnctechnologies@gmail.com](mailto:expertscnctechnologies@gmail.com)**